

Ultrasonic Bone Surgery , Imaging & Endoscopy

CARING PEOPLE, IMPROVING LIVES.

Medical Catalog



Content

About us	04
Ultrasonic Bone Surgery	08
3D imaging	26
Endoscopy	32



About us

“Today we are innovating because tomorrow we could be the patient”: it is in this spirit that the ACTEON® medical team works constantly to develop its products.

Technology should have only one purpose: to help us live better. This is why we base our approach on the greatest respect of patients and their safety.

*“ Inspired by the practitioners,
dedicated to their patients. ”*



our vision

our mission

We believe healthcare is first and foremost about quality of life. Medical treatments are more than just procedures, they restore health, comfort, confidence and happiness and improves life of millions of patients every year. Our vision is to pave the way of a more human-centered healthcare industry based on proactive lifetime care.

To remain at the top of their game and focus on what matters most, healthcare professionals trust integrated solutions that empower them and improve their practices on a daily basis. We provide comprehensive, intuitive workflow solutions that put technology at the service of people and help healthcare professionals restore patients' health effectively, efficiently, and economically.



Ultrasonic Bone Surgery

Piezotome® solo m+	10
Device	10
Footswitch & Handpiece	11
Clinical kits	12
Rhinoplasty tips «Essential»	14
Rhinoplasty tips «Expert»	15
Rhinoplasty tips «Preservation»	16
CMF tips «Essential»	17
All tips	18
Osteotomy tips	18
Osteoplasty tips	20
Bone remodeling / Drilling tips	21
Membrane detachment tips	22
Tip measuring guide	23
Additional products	24

Piezotome® solo m+ Device



Reference	Description
F57850	Piezotome® Solo M+ CEE
F57853	Piezotome® Solo M+ AUS
F57856	Piezotome® Solo M+ US
F57859	Piezotome® Solo M+ UK

- Medical device of class IIb - CE 0459 according to Medical Device Directive 93/42/EEC
- Manufacturer: SATELEC, a company of ACTEON® Group

SPECIFICATION OF THE DEVICE

F57850 / F57853 / F57856 / F57859

- Dimensions (W x H x D): 378 x 136 x 306mm
- With brackets: 378 x 460 x 306mm
- Weight: 3700 g
- Screen dimensions (W x H): 115 x 86 mm
- LCD black & white screen
- 4 power modes
- 4 programmable buttons
- Irrigation flow rate: 0 to 120 ml/min
- Reset to manufacturer settings
- Supply voltage: 100 - 230 VAC
- Power supply frequency: 50 Hz / 60 Hz
- Power consumption: 150 VA to 230 VAC
- No-load voltage: 250 V
- Minimum output frequency: 28 kHz
- Amplitude: 20 to 200 µm
- Internal fuse not accessible to the user: 1 fuse - F1: 5mm x 20mm - 10 AT / 250 VAC
- Fuse (mains connector): 2 fuses - 5mm x 20mm - 2 AT for 100 to 230 VA

Piezotome® solo m+ Handpiece & Footswitch



Reference	Description
F12860	Piezotome® M+ handpiece

- Medical device of class IIb - CE 0459 according to Medical Device Directive 93/42/EEC
- Manufacturer: SATELEC, a company of ACTEON® Group

SPECIFICATION OF THE PIEZOTOME® M+ HANDPIECE

F12860

- Dimensions (L): 130 mm
- Weight: 100 g
- With cord: 265 g
- Cord length: 2900mm
- 6 ceramic rings
- Cold LED light (power): 100 000 LUX



Reference	Description
F57851	Piezotome® Solo M+ footswitch

SPECIFICATION OF PIEZOTOME® SOLO M+ FOOTSWITCH

F57851

- Cord length: 2900mm
- Dimensions (W x H x D): 173 x 140 x 176mm
- Weight: 1000 g
- Light: remains active approx. 9 secs after the footswitch is released
- Multifunction footswitch:
 - Power modes
 - ON/OFF ultrasound
- Protection rating: IPX6

Clinical kits

Introduction

INTENDED USE

M+ tips can be used for osteotomy, osteoplasty, decortication, drilling, shaping and smoothing of teeth and bone in various surgical procedures, including but not limited to general, orthopaedic, otolaryngological, maxillofacial, oral, hand and foot, neurosurgery, spinal and plastic/reconstructive surgeries.

SPECIFICATION OF REUSABLE NON-STERILE TIPS

- Non-sterile tips can be used up to 5 times
- Refer to cleaning, disinfection and sterilization protocols for SATELEC® tips



REGULATORY & ENVIRONMENT

- Class IIb according to the European Directive 93/42/EEC
- Designed and manufactured in accordance with an EN ISO 13485-certified quality assurance system
- Documentation complies with European regulation No.207/2012
- Manufacturer: SATELEC®, a company of ACTEON® Group (France)



Clinical kits

Rhinoplasty tips «Essential»



Reference	Description
F87681	Rhinoplasty kit "Essential" non-sterile 6 tips - 5 times reusable

Metallic support included



Reference	F87686	F87687	F87679	F87677	F87678	F87680
Length (mm)	33.7	33.7	34	30	30	27
Offset (mm)	11	11	11	10	10	17
Width (mm)	3.5	3.5	2.6	5	5	•
Thickness (mm)	1.3	0.9	0.5	0.6	0.6	0.5

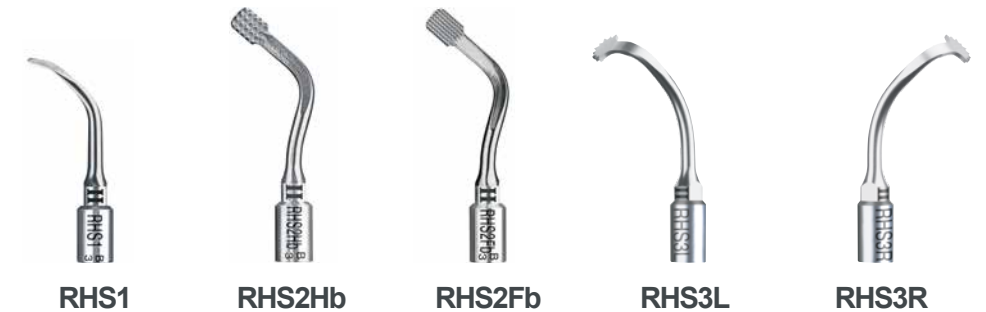
Clinical kits

Rhinoplasty tips «Expert»



Reference	Description
F87689	Rhinoplasty kit "Expert" non-sterile 9 tips - 5 times reusable

Metallic support included



Reference	F87688	F87686	F87687	F87677	F87678
Length (mm)	28	33.7	33.7	30	30
Offset (mm)	12.2	11	11	10	10
Width (mm)	3.5	3.5	3.5	5	5
Thickness (mm)	0.55	1.3	0.9	0.6	0.6



Reference	F87683	F87682	F87679	F87680
Length (mm)	31.5	31.5	34	27
Offset (mm)	9.5	9.5	11	17
Width (mm)	2.6	2.6	2.6	•
Thickness (mm)	0.5	0.5	0.5	0.5

Clinical kits

Rhinoplasty tips «Preservation»



RHL4L** **RHL4R**** **RHL5**** **RHL6**** **BS6 XXL**

Reference	F87692	F87691	F87684	F87693	F87604
Length (mm)	91.7	91.7	59.6	101.4	103
Offset (mm)	9.7	9.7	14.6	9.7	12.2
Width (mm)	2.6	2.6	5.1	5	3.5
Thickness (mm)	0.4	0.4	0.6	0.6	0.55

Clinical kits

CMF tips «Essential»



Reference	Description
F57803	CMF kit non-sterile 6 tips - 5 times reusable

Metallic support included



BS1L **BS2L XL** **BS2R XL** **BS1RD** **SL1** **BS4**

Reference	F87612	F87605	F87606	F87608	F87618	F87615
Length (mm)	31	39.5	39.5	38.9	33	31
Offset (mm)	22	30	30	12.3	11	12.6
Width (mm)	4	4	4	5	2.6	4
Thickness (mm)	0.6	0.8	0.8	0.6	0.3	0.7

**Please contact us to find out the availability of the product in your country

All tips

Osteotomy tips



BS1S **BS1RD** **BS1L** **BS2L** **BS2R**

Reference	F87611	F87608	F87612	F87613	F87614
Length (mm)	28.2	38.9	31	28	28
Offset (mm)	15	12.3	22	9.35	9.35
Width (mm)	4	5	4	4	4
Thickness (mm)	0.6	0.6	0.6	0.65	0.65



BS2L XL **BS2R XL** **BS5** **RHS3L** **RHS3R**

Reference	F87605	F87606	F87616	F87677	F87678
Length (mm)	39.5	39.5	33.8	30	30
Offset (mm)	30	30	11.1	10	10
Width (mm)	4	4	2.6	5	5
Thickness (mm)	0.8	0.8	0.5	0.6	0.6



BS1 XXL **RHL4L** **RHL4R** **RHL5** **RHL6**

Reference	F87602	F87692	F87691	F87684	F87693
Length (mm)	104	91.7	91.7	59.6	101.4
Offset (mm)	15	9.7	9.7	14.6	9.7
Width (mm)	4	2.6	2.6	5.1	5
Thickness (mm)	0.6	0.4	0.4	0.6	0.6



RHS4L **RHS4R** **RHS5** **NINJA** **LC1 XL** **SL1** **CS1**

Reference	F87683	F87682	F87679	F87628	F87607	F87618	F87629
Length (mm)	31.5	31.5	34	26.4	32.1	33	29.8
Offset (mm)	9.5	9.5	11	15.2	21.5	11	17.8
Width (mm)	2.6	2.6	2.6	2.6	1.2	2.6	4
Thickness (mm)	0.5	0.5	0.5	0.6	0.7	0.3	0.5

All tips

Osteoplasty tips



	BS4	BS6	RHS1	RHS2Hb	RHS2Fb
Reference	F87615	F87617	F87688	F87686	F87687
Length (mm)	31	28	28	33.7	33.7
Offset (mm)	12.6	11.9	12.2	11	11
Width (mm)	4	3.5	3.5	3.5	3.5
Thickness (mm)	0.7	0.55	0.55	1.3	0.9



BS6 XXL	
Reference	F87604
Length (mm)	103
Offset (mm)	12.2
Width (mm)	3.5
Thickness (mm)	0.55

All tips

Bone remodeling / Drilling tips



	CE3	DB1	DB2	RHS6	SL2
Reference	F87653	F87610	F87609	F87680	F87619
Length (mm)	29.8	27	30.7	27	28
Offset (mm)	10.2	17	20.1	17	14
Width (mm)	•	•	•	•	•
Thickness (mm)	0.85	0.6	2.3	0.5	1.5

All tips

Membrane detachment tips



	SL3	SL4	SL5
Reference	F87620	F87621	F87622
Length (mm)	31	29.1	30.9
Offset (mm)	12	10.2	11.1
Width (mm)	5	4	4
Thickness (mm)	0.4	0.65	0.65



Tip measuring guide

	Length (a)	Offset (b)	Width (c)	Thickness (d)
Osteotomy				
Osteoplasty				
Bone remodeling / Drilling				
Membrane detachment				

Additional products



Reference	Description
F00398	M+ Flat key

Not a Medical Device



Reference	Description
E27113	Bracket M+

Component of Class IIb Medical Device as per Medical Device Directive 93/42/EEC



Reference	Description
F87903	M+ Protective sleeve For extra long tips (XXL)

Not for sale in the US



Reference	Description
F12821	LED Ring M+

Spare parts of Medical Device

Additional products



Reference	Description
F59926	Set of 1 disposable sterile line With clips and perforators

Reference	Description
F59925	Set of 5 disposable sterile lines With clips and perforators

Accessories of Medical Device, Class I as per Medical Device Directive 93/42/EEC



Reference	Description
F88445	Tips metallic support M+ 6 slots Without tip and marking

Not a Medical Device



Reference	Description
F88474	Tips metallic support M+ 10 slots Without tip and marking

Not a Medical Device



3D imaging

CBCT imaging	28
X-Mind® prime Pan 3D	28
Spare parts	30
Acteon® Imaging Suite (AIS)	31

CBCT imaging

X-Mind® prime Pan 3D



x-mind prime 2

Reference	Designation / Description
W1200005	X-MIND prime Pan 3D 3D Wall-mounted version 110–240V + WS + Monitor
W1200107*	XMP EXTENDED VIEW (12X10)

W1200005 - Delivered with:

- ACTEON® Imaging Suite (AIS) Software
More information, on page after
- XMP 3D WORKSTATION
Windows 10, 64 bits. Nvidia Graphic card, 1 Gbit Ethernet Network card. AIS 3D APP PRO
- 22" MONITOR
DELL P2219H 22" monitor

* Mandatory for rhinoplasty application

SPECIFICATION OF THE DEVICE

W1200005

X-RAY sources

- Total Filtration: ≥ 2.5 mm Al eq. @ 86kVp
- Tube Voltage: 60 - 86 kV
- Anodic current: 2 - 12.5 mA
- Focal spot: 0.5

Detectors

- Type: CMOS Flat Panel
- Pixel size: 100 µm
- Voxel size:
72.5 µm High-res- mode
145 µm Standard mode

- Gray levels: 65536 (16 bit)
- Sensitive area (H x L):
139.2 x 119.6 mm

Mechanical data

- Footprint: 1107 x 1063 mm
- Height: 2188 mm (max)
- Weight: 67 kg
- Focal spot to image receptor distance: 520 mm (20")

ACQUISITION

2D Programs

- Panoramic (adult/child) - Lateral TMJ (open/closed mouth) - Maxillary Sinuses (PA) - Half panoramic (L/R) - Low Dose Panoramic
- Frontal Dentition - Bitewing (L/R/Bilateral) - Ortho Rad Panoramic

- (50x50 mm ØxH)
- TMJ (85x90 mm ØxH)
- Maxillary Sinuses (85x93 mm ØxH)
- Extended dentition (120x100 mm ØxH) - Extended airways (120x100 mm ØxH)

3D Programs

- Full dentition (85x93 mm - ØxH) - Single jaw (85x50 mm - ØxH)
- Mandibular teeth (50x50 mm ØxH)) - Maxillary teeth

Exposure time

- up to 14 s (standard panoramic)
- from 4.3 s (Ceph 18x24 HS)
- from 5.7s (3D exams)

WORKSTATION MINIMUM REQUIREMENTS

	3D PAN/CEPH WINDOWS (WORKSTATION)	PAN/CEPH WINDOWS (WORKSTATION)	CLIENT WINDOWS / MAC OS
Processor	Intel Core i7 (4 cores 8 threads) 3GHz or higher or Inter Core i5 ≥ 13 th generation	Intel Core i5	Intel Core i5
Hard Disk	1 TB	1 TB 7200 rpm	300 GB
RAM	8 GB	8 GB	4 GB or 8 GB (for big FOV DICOM stacks)
Graphic Card	Chipset NVIDIA Global memory ≥ 4 GB	Open GL 2.1 compatible (suggested NVIDIA GT/GTX)	NVIDIA Geforce or NVIDIA Quadro with 1 GB dedicated RAM
Screen resolution	1920 x 1080	1920 x 1080	1920 x 1080
Network Card	Dual Port Network Card included with the delivery. A free PCI express X16 slot is required for the Dual Port Network Card installation.	Single Port Network Card included with the delivery. A free PCI express X16 slot is required for the single Port Network Card.	100 Mb for PAN/CEPH 1GB for CBCT
Operating System	Windows 10 - 64bit	Windows 10	Windows 10 / OS X Sierra (10.12)

CBCT imaging

Spare parts

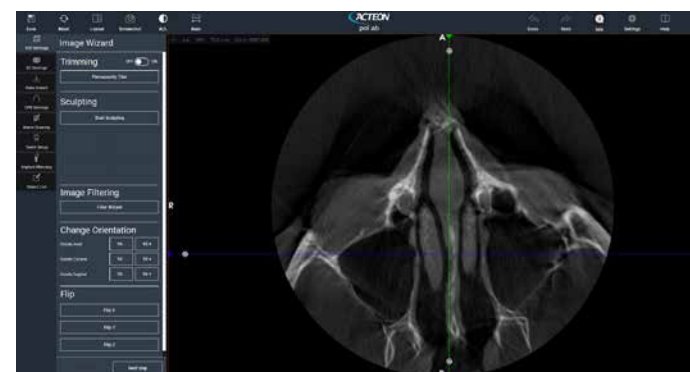
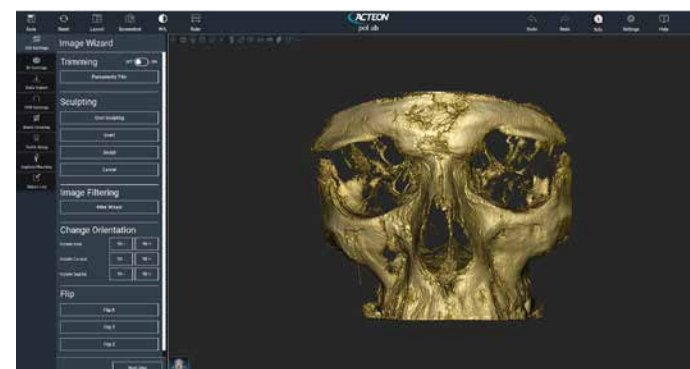
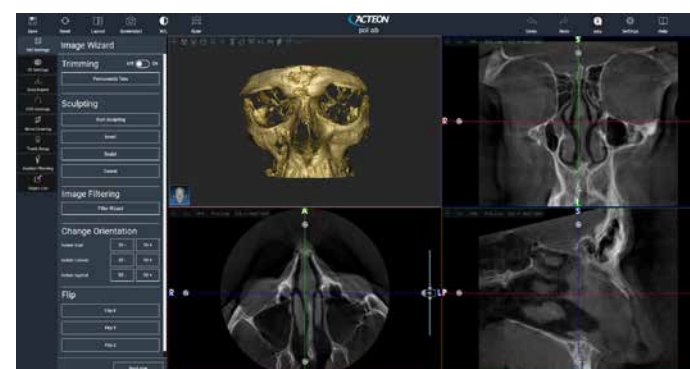


Reference	Designation / Description
W1200100	Self-standing base
W1200101	Column

Reference	Designation / Description
	XMP 3D WORKSTATION
6604900100	Windows 10, 64 bits. Nvidia Graphic card, 1 Gbit Ethernet Network card. AIS 3D APP. not included: monitor
4695454900	22" MONITOR DELL P2219H 22" monitor
4695488300	Ethernet board dual port
6604011605	Chin rests maxillary sinus
6604012000	Full 2D and 3D panoramic chin rest
5407098100	Chin rest for edentulous
6604011800	TMJ support
6101010212	Temple bar left 2D, 3D & CEPH
6101010112	Temple bar right 2D, 3D & CEPH
6607090100	Pan centering bites x50
6107110700	Disposable bite protective sleeves x100
W1200107	XMP EXTENDED VIEW (12X10)

Imaging software

Acteon® Imaging Suite (AIS)



AIS 3D App 5.0

Reference	Designation / Description
W1000024	AIS 3D APP 5.0 Pro
W1000025	AIS 3D APP 5.0 Design 1 year license, for the first year
W1000026	AIS 3D APP 5.0 Design 1 year license, starting the second year

AIS - DICOM Licence

Reference	Designation / Description
W0900153	Licence AIS DICOM package



Endoscopy

Video cameras	34
Full HD USB camera	34
Combined Cam / Led	36
Light sources	38
LED light source	38
LED light stick	39
Accessories for light sources	40
Accessories for light cables	41
Monitor	42
15" Full HD	42
Imaging software	43
Medical imaging	43
Medical cart	44
Ubicart	44
Packs	46
Duo Full HD pack	46
Ubipack	47

Video cameras

Full HD USB camera



Reference	Designation / Description
S_191_0002	UBICAM FULL HD USB 3.0 UBICAM® Full HD USB 3.0 - C-mount - without coupler

SPECIFICATION OF THE USB CAMERA HEAD

S_191_0002

- 1/2" 1CMOS sensor high sensibility
- Resolution: 1920 x 1080
- Active pixels area: 1920 x 1080
- Sensitivity: 0,1 lux (Type 2350mV, Condition 1/30s, F5,6)
- Signal/Noise Ratio: 52 dB
- Latence < 150 ms
- Automatic electronic shutter (1/25 to 1/30 000)
- OSD information
- 3 pre-programmed buttons allowing: photo and video capture, digital zoom, white balance, anti-moiré filter activation
- Automatic saving of the adjusted parameters
- Automatic white balance
- Automatic detection of the colour temperature
- Video parameter adjustments via UVC
- Electronic anti-moiré filter for flexible endoscopes
- Cable length: 2,95 meters, Ø = 5,5 mm
- Dimensions: L = 103 mm; Ø = 38 mm
- Weight (Camera head only): 96 g
- Standard USB 3.0 type A connector
- Power consumption: 2 VA
- Protection type: IPX7 - waterproof (except USB connector)
- Continuous service



Reference	Designation / Description
S_024_0001	24MM HD COUPLER 3S V1 24mm HD coupler - C-mount - Scope holder with locking capacity - Weight: 90g - Protection type: IPX7 (waterproof) - Compatible with all C-mount cameras

- Medical device of class I - CE
- Manufacturer: SOPRO™ (France)

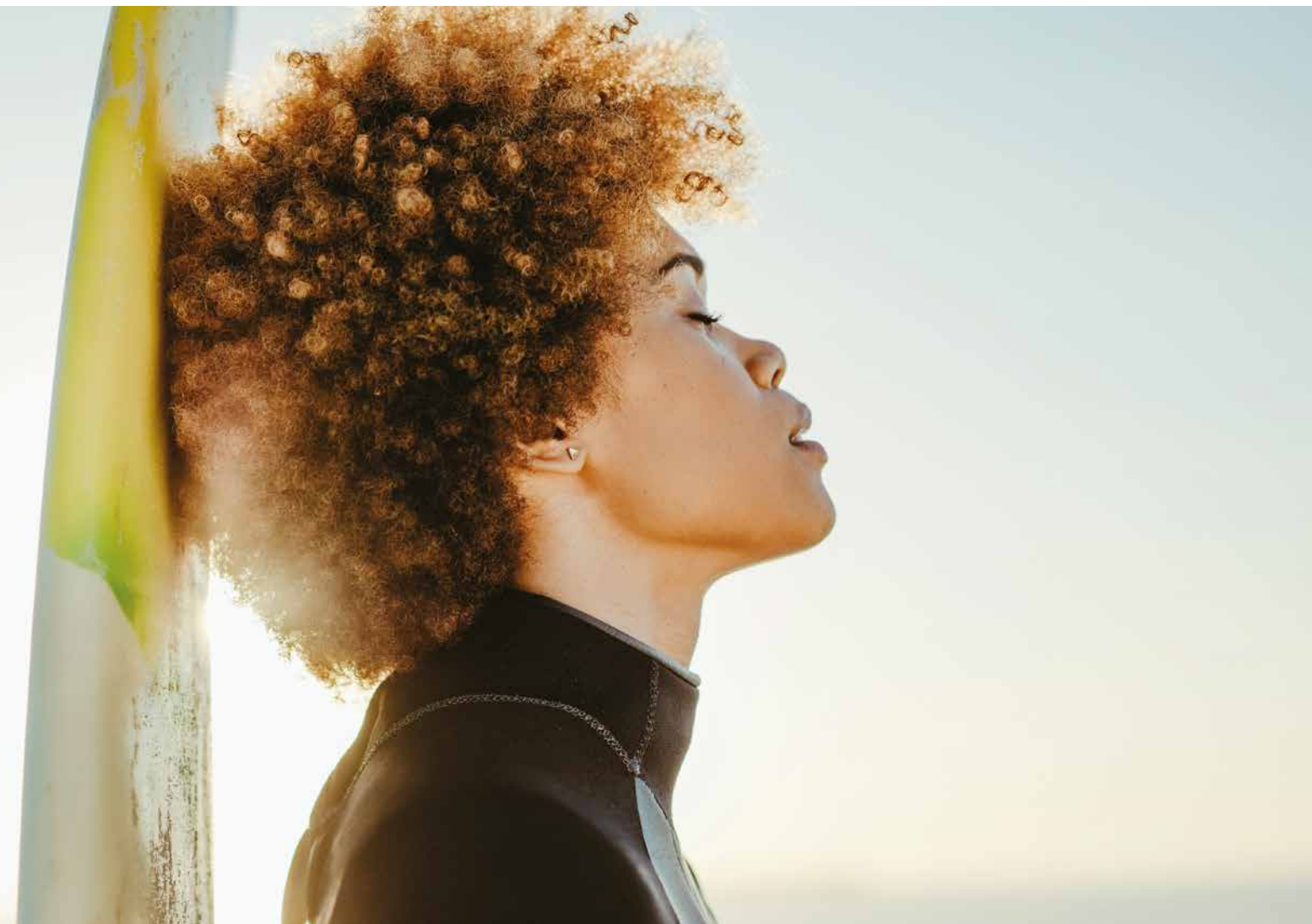


Reference	Designation / Description
S_413024	F16-34MM COUPLER 16-34mm HD Zoom coupler - C-mount - scope holder - Compatible with all C-mount cameras

- Medical device of class I - CE
- Manufacturer: SOPRO™ (France)

For more options, see accessories at the end of this chapter
Ubicam® is a registered trademark of SOPRO

Medical devices of class I - CE / Manufacturer: SOPRO™ (France) / Distributed by SOPRO, under the commercial brand ACTEON® medical



Video cameras

Combined Cam / Led



Reference	Designation / Description
S_195_9000	DUO FULL HD - S195 - CCU - EU DUO FULL HD - S195 - Camera control unit - EU
S_195_9001	DUO FULL HD - S195 - CCU - US DUO FULL HD - S195 - Camera control unit - US



Reference	Designation / Description
S_195_8000	DUO FULL HD - S195 - SENSOR DUO FULL HD - S195 - Camera head - Without coupler

SPECIFICATION OF THE CAMERA CONTROL UNIT (CCU)

S_195_9000 & S_195_9001

- Automatic white balance
- Video outputs:
 - 1 HDMI
 - 1 HD-SDI/3G-SDI
 - 1 USB 3.0 micro B
- Compatible with Storz® and Olympus® type light cables
- Electronic iris shutter
- Automatic thermal protection system
- Manual adjustment of the light intensity
- Anti-blinding feature with light cable detection
- LED technology
- LED lifetime up to 50 000 hours
- Color temperature: 5 400 K
- Intensity: max. 23 000 lux
- Brightness, detail, red and blue gains, color adjustments
- Gain: Off / Low / High
- Freeze feature accessible from the camera head
- Flexible mode accessible from the control unit and the camera head
- On screen displayed adjustments
- "SAVE" function to memorize the settings
- "RESET" function to restore to the factory settings
- Digital zoom up to 2.5x
- Full HD Images recorder integrated (USB) / .tiff format
- Recommended USB stick format: FAT32
- Touchscreen with intuitive interface
- 17 languages
- Dimensions (W x H x D): 260 x 100 x 215mm
- Weight: 1900 g
- Protection type: IPX0 (not drip-proof)
- Power supply: 100 - 240 VAC / 50 - 60 Hz
- Power consumption: 85 - 95 VA
- Two T 1,6 A - 250 V fuses (Marked UL/CSA only)
- Continuous service

SPECIFICATION OF THE CAMERA HEAD

S_195_8000

- 1CMOS Exmor R™ technology 1/2" Full HD sensor
- 2 Programmable buttons
- Automatic electronic shutter (1/50 to 1/100 000)
- Resolution: 1920 x 1080 p
- Definition: 1080 lines
- Active pixels area: 1920 x 1080
- Cable length: 2,99 meters
- Dimensions (D x H): 130 x 47mm
- Weight (camera only): 150 g
- Protection type: IPX7 (waterproof)



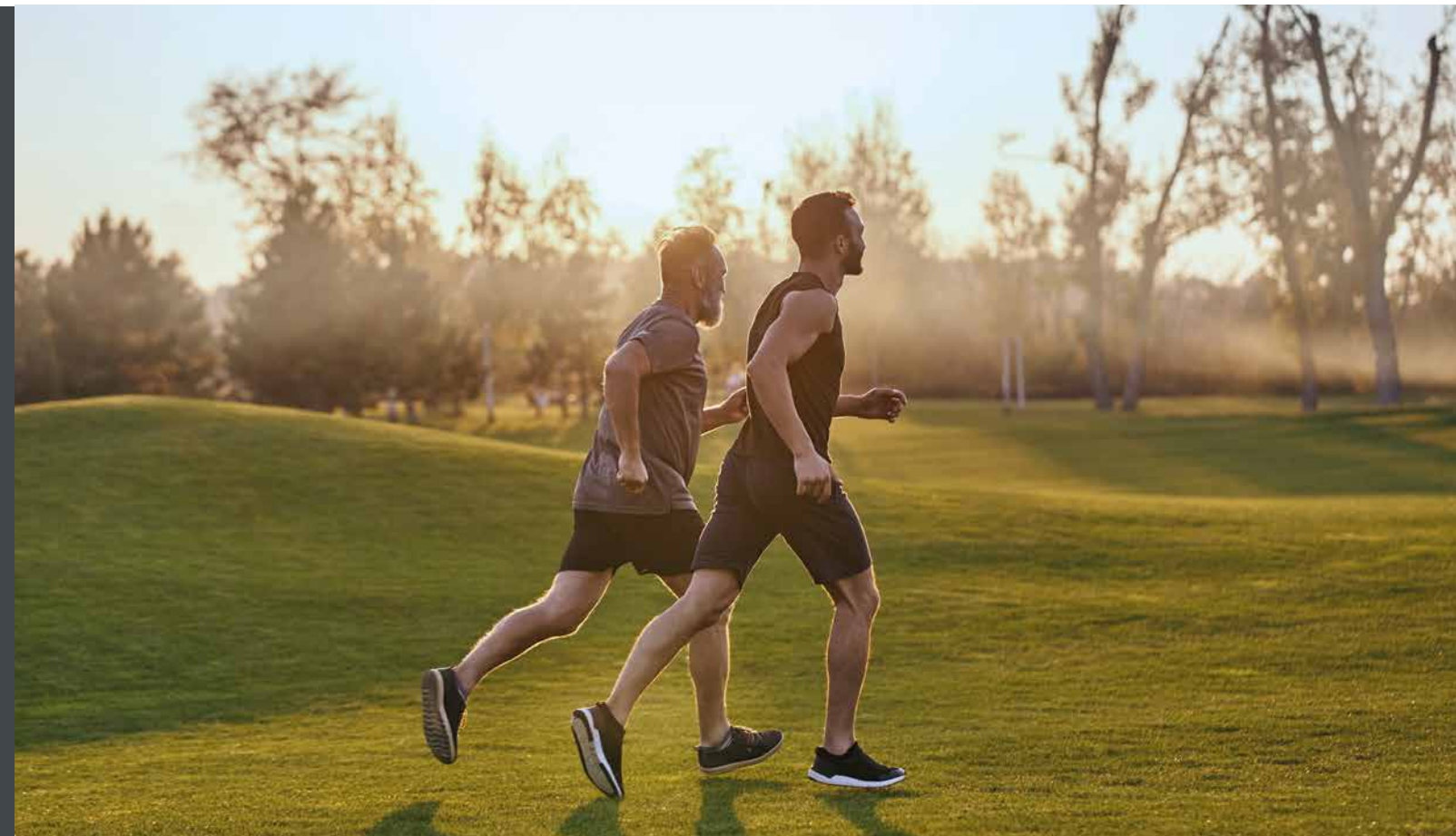
Reference	Designation / Description
S_024_0001	24MM HD COUPLER 3S V1 24mm HD coupler - C-mount - Scope holder with locking capacity - Weight: 90g - Protection type: IPX7 (waterproof) - Compatible with all C-mount cameras

- Medical device of class I - CE
- Manufacturer: SOPRO™ (France)



Reference	Designation / Description
S_413024	F16-34MM COUPLER 16-34mm HD Zoom coupler - C-mount - scope holder - Compatible with all C-mount cameras

- Medical device of class I - CE
- Manufacturer: SOPRO™ (France)



Light sources

Compact LED light source



Reference	Designation / Description
S_281_0002	UBILIGHT - S281 - SOURCE LED UBILIGHT - S281 - LED light source - with external transformer - Storz® adapter by default

Option:

Reference	Designation / Description
402048	OLYMPUS ADAPTER FOR S281 Olympus® light source adapter for S281 Led light source



SPECIFICATION

S_281_0002

- LED technology
- LED lifetime: up to 50.000 hours
- Intensity max: 22 000 lux
- Intuitive adjustment of light intensity
- Color temperature: > 4500°K
- Automatic thermal protection system
- Anti-blinding feature with light cable detection
- Standby mode
- Power level memory
- Low heat generation
- Compatible with Storz® type light cables (Olympus® optional)
- Dimensions (W x H x D): 180 x 95 x 35mm
- Weight: 320 g
- Protection type: IPX0 (not drip-proof)
- Power supply: 100 - 240 VAC / 50 - 60 Hz
- Power consumption: 30 VA
- Transformer: 12V DC
- Continuous service

Light sources

Portable LED light stick



Reference	Designation / Description
200.02531.02	LED PORTABLE LIGHT SOURCE LED portable light source - with USB charger

SPECIFICATION

200.02531.02

- LED technology
- Intensit max: 1 000 Lumens
- Intuitive adjustment of light intensity
- 5 brightness levels including a stroboscopy mode
- Color temperature: > 5 000°K
- Compatible with endoscopes with ACMI and WOLF connection
- Including USB charging station
- Battery charge indicated by a LED (red < 10% ; yellow ~ 10% - 60% ; green > 60%)
- Locking system to avoid unintentional switching ON
- Dimensions: 63 x 21mm
- Weight: 51 g (including the battery)
- Protection type: IPX8 (water resistant)
- Battery: 3,7 V / 550mAh / 2.0Wh

Light sources

Accessories for light sources

Light cables



- Compatible with all light sources and autoclavable at 134°C (273,2°F)
- Reinforced sheath
- Universal model delivered without connectors

Ø	L.	Reference
4.8mm	3m	S_700382
	2.3m	S_700384
3.5mm*	3m	S_700216
	2.3m	S_700215

*For scope diameter < 4mm

- Medical device of class I - CE
- Manufacturer: SOPRO™ (France)

Light sources

Accessories for light cables

Endoscope side connectors



Reference	Designation / Description
700051	STORZ ADAPTOR OPTIC SIDE Connector for universal light cable - endoscope side type Storz®/Olympus®



Reference	Designation / Description
700043	WOLF ADAPTOR OPTIC SIDE Connector for universal light cable - endoscope side type Acmi/Stryker®



Reference	Designation / Description
700048	ACMI/STRYKER ADAPT OPTIC SIDE Connector for universal light cable - endoscope side type Acmi/Stryker®

Light source side connectors



Reference	Designation / Description
700044	STORZ ADAPT LIGHT SOURCE SIDE Connector for universal light cable - light source side type Storz®



Reference	Designation / Description
700045	OLYMPUS ADAPT LIGHT SOURCE SIDE Connector for universal light cable - light source side type Olympus®



Reference	Designation / Description
700046	WOLF ADAPTOR LIGHT SOURCE SIDE Connector for universal light cable - light source side type Wolf®/S&N



Reference	Designation / Description
700047	ACMI/STRYKER ADAPT SOURCE SIDE Connector for universal light cable - light source side type Acmi/Stryker®



Monitor

15" Full HD



Reference	Designation / Description
S_700799	BEETRONICS Full HD 15" MONITOR BEETRONICS® non-medical Full HD 15" monitor

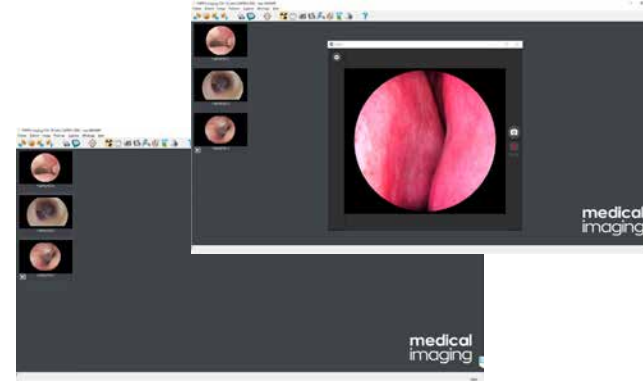
SPECIFICATION

S_700799

- Panel: 15", matte, LED-IPS
- Resolution: 1920 x 1080 pixels
- Luminance: 400 cd/m²
- Contrast ratio: 700:1
- Viewing angle: 178° horizontal, 178° vertical
- Aspect ratio: 16:9 (4:3 adjustable)
- Video inputs: 1x HDMI, 1 x VGA, 1 x BNC (CVBS), 1 x RCA, 1 x USB
- Mounting: VESA 75mm
- Dimensions (W x H x D): 373 x 232 x 33mm
- Weight: 980 g (1598 g with stand)
- Power supply: 110 - 240 V / 50 - 60 Hz
- Power consumption: <15 Watt (0.5 Watt standby)

Imaging software

Medical imaging



Reference	Designation / Description
505026	MEDICAL IMAGING LICENSE Medical Imaging (SIM) License
990311	MEDICAL IMAGING USB STICK USB STICK: Medical Imaging software

SPECIFICATION

505026 & 990311

SOPRO™ Medical Imaging software constitutes a complete database of all your patients. A wide range of ergonomic and high-performance tools:

- Capture of images or video sequences,
- Photo/video annotation,
- Editing and personalization of medical reports,
- Simple and intuitive video editing,
- Audio recording,
- Data security.

CONFIGURATION

WINDOWS® MINIMUM REQUIRED CONFIGURATION

- Operating system: Windows® 10 Pro
- Processor: Intel® core i5
- RAM: 16 GB
- Hard disk: SSD 250 GB
- USB port:
 - 1 USB 3.1 Gen1 Super Speed for Full HD cameras
 - 1 USB 2.0 Hi-Speeds ports for SD cameras
- Graphic card: 1 GB RAM
- USB Chipset: Intel® or NEC® / RENESAS®
- Screen resolution: 1280 x 1024

WINDOWS® RECOMMENDED CONFIGURATION

- Operating system: Windows® 10 Pro
- Processor: Intel® core i7 or more
- RAM: 16 GB
- Hard disk: SSD 1 TB or more
- USB port:
 - 1 USB 3.1 Gen1 Super Speed for Full HD cameras
 - 1 USB 2.0 Hi-Speeds ports for SD cameras
- Graphic card: chipset Nvidia® or ATI® / Unshared memory 2 GB RAM
- USB Chipset: Intel® or NEC® / RENESAS®
- Screen resolution: 1920 x 1080

ACCESSORIES



Reference	Designation / Description
700694	MEDICAL KEYBOARD QWERTY Medical Keyboard QWERTY - Waterproof IPX7
700695	MEDICAL KEYBOARD AZERTY Medical Keyboard AZERTY - Waterproof IPX7

SOPRO™ is an unregistered trademark of SOPRO



Medical cart

Ubicart



- Shelf 460 x 435 mm
- 4 way Power strips
- Standard mount (VESA 75/100 mm)
- 2 x 1 m Power cords
- 2 x 2 m Power cords

Reference	Designation / Description
S_700791	UBICART 150CM - EU Ubicart - EU
S_700793	UBICART 150CM TRANSFORMER EU Ubicart - EU with transformer
S_700792	UBICART 150CM - UK Ubicart - UK
S_700797	UBICART 150CM TRANSFORMER UK Ubicart - UK with transformer
S_700798	UBICART 150CM - US Ubicart - US

ACCESSORIES



Reference	Designation / Description
700704	UBICART OPTIONAL EXTRA SHELF Extra shelf (460x435mm) for UBICART

Reference	Designation
700705	UBICART OPTIONAL PULLOUT SHELF



Reference	Designation
700706	UBICART OPTIONAL DRAWER



Reference	Designation / Description
700707	UBICART OPTIONAL SERUM HOLDER Serum holder on swivel arm for UBICART



Reference	Designation / Description
700708	UBICART OPTIONAL DOUBLE PIVOT Double pivot for VESA for UBICART



Reference	Designation / Description
700709	UBICART SINGLESIDE STD RUNNER Single-side standard runner for UBICART



Reference	Designation / Description
700710	UBICART OPTIONAL STD RUNNER Standard runner for UBICART



Reference	Designation
700621	CAMERA HOLDER STAINLESS STEEL



Reference	Designation
700622	CAMERA HOLDER STAINLESS STEEL



Reference	Designation / Description
700309	POWER CORD 60CM Power cord 60cm IEC320-IEC320 (male/female)

Packs

Duo Full HD pack



	S195 CCU - EU S_195_9000	S195 CCU - US S_195_9001	S195 sensor S_195_8000	24mm coupler S_024_0001	Light cable With Storz® adapters (700044/700051) S_700216
Ref EU S_K19_1000	✓		✓	✓	✓
Ref US S_K19_1001		✓	✓	✓	✓

Packs

Ubipack



	ubicam without coupler S_191_0002	24mm coupler S_024_0001	medical imaging 990311	Licence 505026	ubilight S_281_0002	Light cable With Storz® adapters (700044/700051) S_700215
S_K11_1000	✓	✓	✓	✓	✓	✓

Ubipack® is a registered trademark of SOPRO
 Ubipack® is a registered trademark of SOPRO
 Ubicam® is a registered trademark of SOPRO



 **SATELEC**

A company of ACTEON® Group

**17 Av. Gustave Eiffel,
ZI Phare
33700 Mérignac
France**

acteonmed@acteongroup.com

Follow-us

